

FIND THE GOLD: PART 2

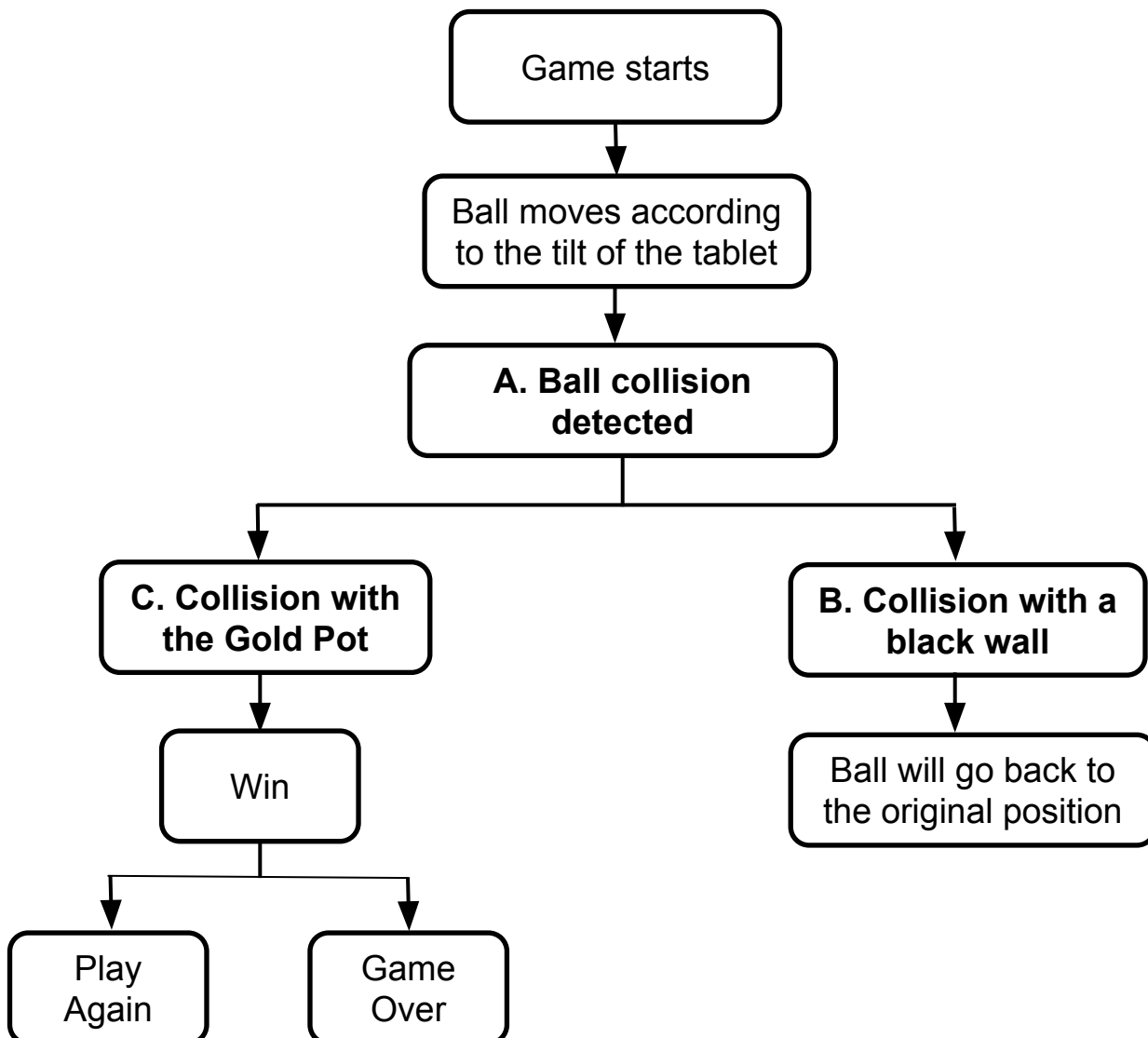


You will now
add Ball movement to your
maze game so the Ball
moves as you tilt the
mobile device

REVIEW

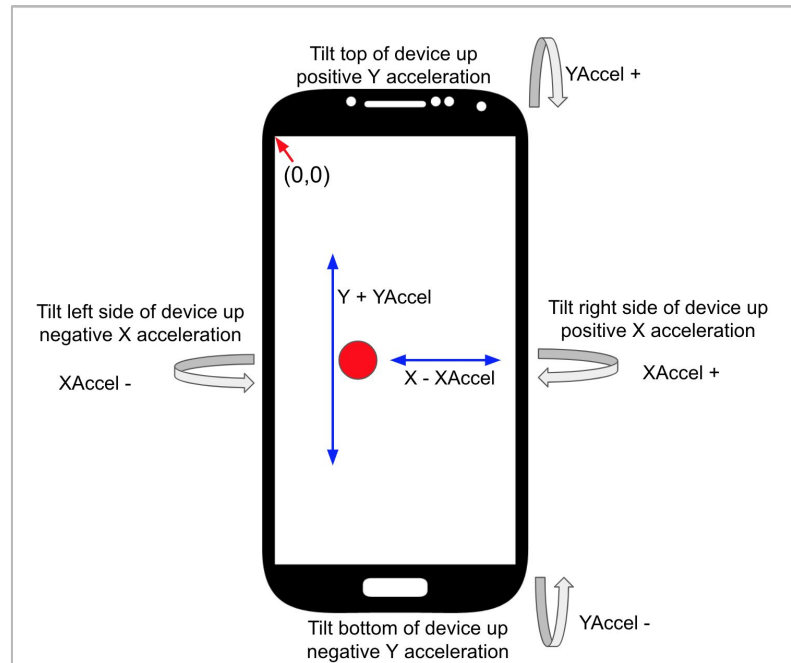
1

Review the diagrams below with your partner. Check that you understand the sequence of steps for the Find the Gold app below.



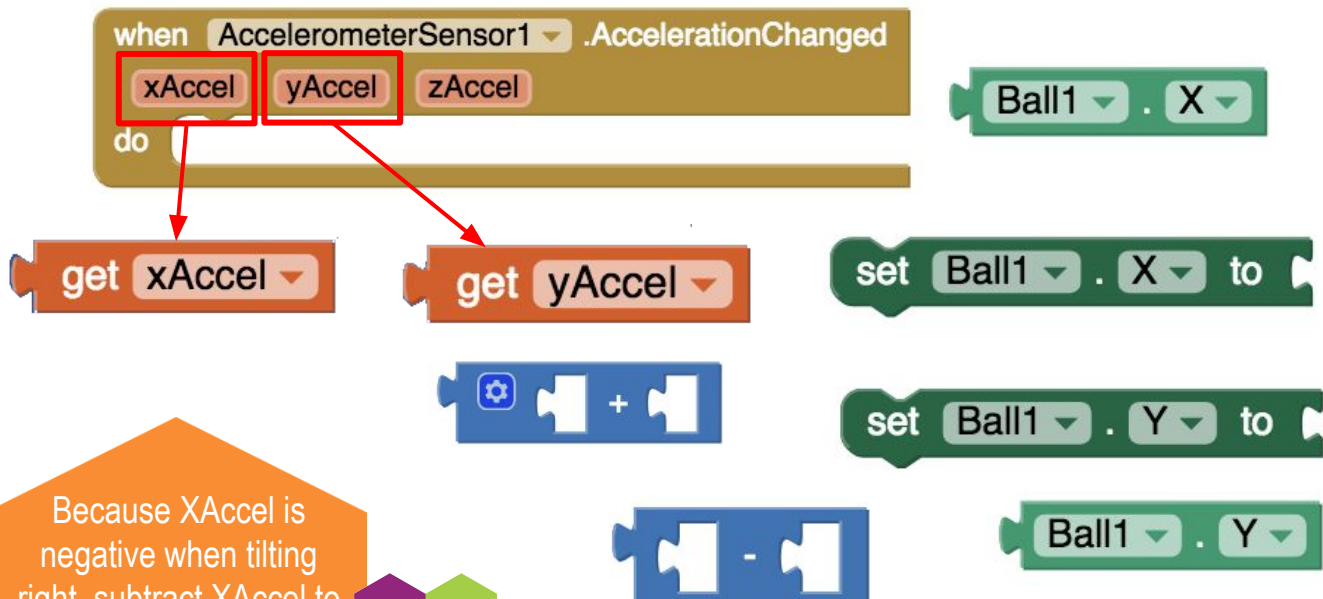
ACCELEROMETER

The **Ball** will move as the user tilts the mobile device. Use the **AccelerometerSensor** to measure the tilt in the X and Y direction to update the **Ball's** position.



2

When the **AccelerometerSensor** detects a change in acceleration, it means the phone is being tilted. Using the following blocks, update the **X, Y** values of **Ball1** to reflect the change in **XAccel** and **YAccel**.



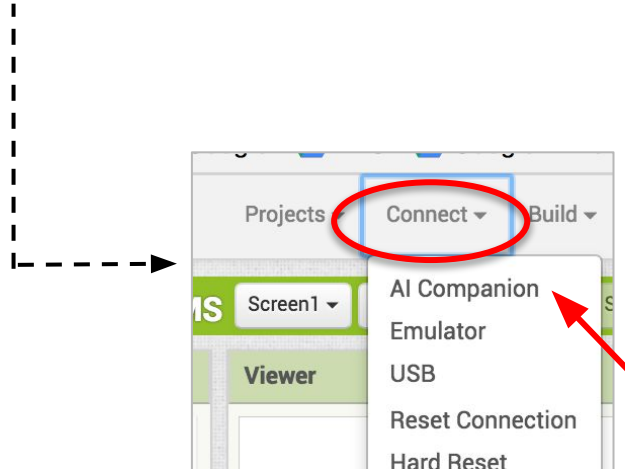
Because XAccel is negative when tilting right, subtract XAccel to make it move according to how you tilt the device.



TESTING!

3

Test the app with the MIT AI2 Companion. Your ball should move according to how you tilt the device!



COMPUTATIONAL THINKING CONCEPTS

The following are the Computational Thinking Concepts learned in Part 2.

Find The Gold

1. Events:



2. Operators:

